

HYDROTRIM™

Water-activated, self-adhesive drywall corner trim.



HYDROTRIM is an easy-to-apply corner that does not blister, bubble, dent or crack. HYDROTRIM's patented design includes a water activated adhesive and punch holes that allow joint compound to further bond the corner to the drywall.

Fast & Easy to Apply

Simply spray with water, press on. No screws, staples or messy adhesive spray needed!

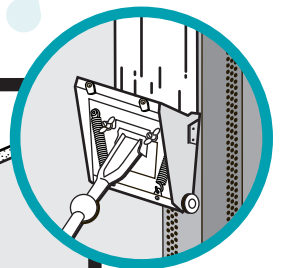
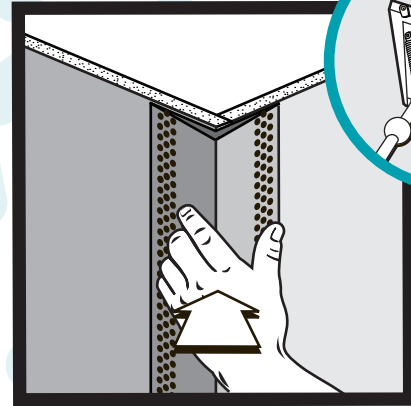
Superior Bond

Water-activated adhesive creates an indestructible bond to drywall; perforated holes allow joint compound to permanently seal corner to wall.

Will not Dent or Crack

Paper-plastic-paper tapered design holds up to even the most severe impacts.

Simply spray it with water... press on and finish.



Box it for faster finishing!

IMPORTANT: READ BEFORE INSTALLING HYDROTRIM

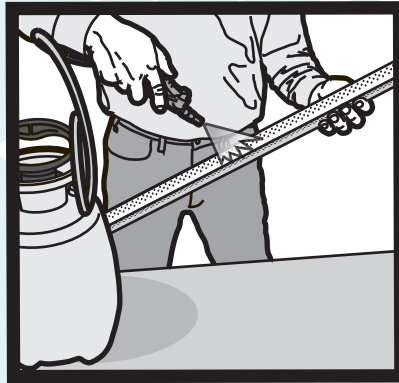
Saturate the entire adhesive surface with clean, plain, tap water

NO



Do NOT use a Sponge

YES



Use a Pump Sprayer or Spray Bottle



Allow 15-60 seconds activation time before installing

PREPARATION

IMPORTANT: Refer to the preparation/framing instructions located on the HYDROTRIM box for the correct way to hang the drywall panels.

INSTALLATION

For best installation results follow these steps:

STEP 1 - Saturate adhesive side of corner completely with clean, plain, tap water using a spray pump.

IMPORTANT: Do Not use a sponge to apply water to the adhesive of the HYDROTRIM.

Make sure the entire adhesive surface of the HYDROTRIM corner is completely wet.

STEP 2 - Allow 15 - 60 seconds adhesive activation time before installing corner. Adhesive should be tacky to touch. Activation time will vary depending upon room temperature, humidity and temperature of water in your pump sprayer.

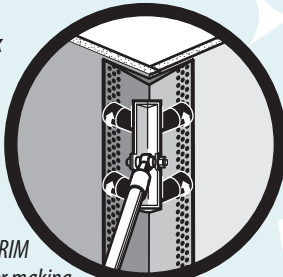
CAUTION: do not soak HYDROTRIM corners.

STEP 3 - Place wetted, adhesive side of corner on wall and align.

STEP 4 - Using HYDROTRIM Roller, firmly press corner making sure flanges are fully contacted and bonded to drywall surface.

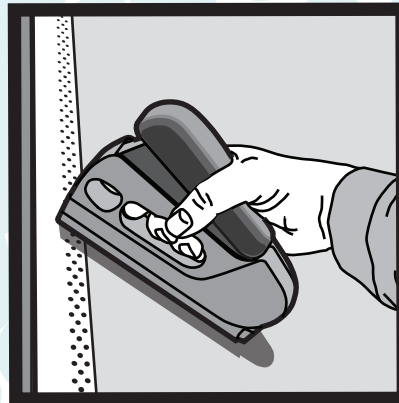
REPOSITIONING: The HYDROTRIM corner may be removed, re-wetted and repositioned if adhesive has not set-up.

IMPORTANT: Once adhesive has set-up, the HYDROTRIM corner cannot be repositioned and will be permanently bonded to the drywall.



Use the HYDROTRIM Roller for best results.

INSTALLATION TIPS



TIP: If the corner flange floats or lifts due to poor hanging or inadequate water coverage, staple the flange to ensure it will lay completely flush against the drywall.

TIP: Snap chalk lines to ensure straight corners on bulkheads and long runs.

TIP: Corners can be cut to length using scissors, metal snips or a chop saw.

TIP: Use a chop saw to cut multiple pieces of HYDROTRIM corners in a bundle to the same length at one time.

FINISHING

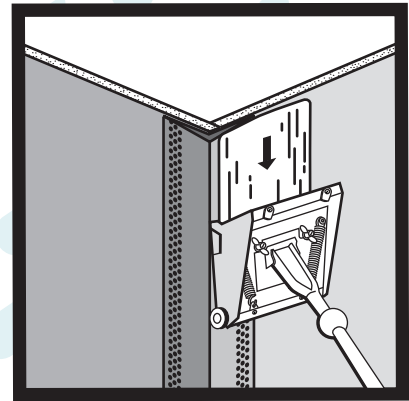
The HYDROTRIM corner can be mudded immediately after application using All-Purpose joint compound. If boxing, wait until adhesive has set-up.

Using a 8" - 10" taping knife, apply All-Purpose joint compound over the HYDROTRIM corner, filling the holes. Let dry.

Using a 10" - 12" finishing knife, skim over the HYDROTRIM corner once more with All-Purpose joint compound. Let dry. Sand and paint.

Box it for faster finishing!

HYDROTRIM corners were designed so that they can also be boxed, resulting in faster and more convenient finishing. Set your 7" or 10" box to #2 or #3 and box up to 30 feet of corners in minutes. HYDROTRIM corner trim uses 15- 30% less mud than bead, so you won't run out of mud before you're done boxing your corner.



HYDROTRIM LIMITED WARRANTY:

Structus Building Technologies, Inc. ("SBTI") makes the following limited warranties to the original retail purchaser of its products:

1. The product is to be free in defect from material and workmanship for a period of (1) year from the date of purchase.
2. If the product fails within the limited warranty period because of a defect in material or workmanship, upon satisfaction of the conditions described below, SBTI will replace the product.

Distributed by

GRABBER
CONSTRUCTION PRODUCTS

A 100% Employee Owned Company

www.grabberman.com
1-800-477-TURN (8876)

For more information visit www.hydrotrimcorner.com, or call 1-888-662-6281.